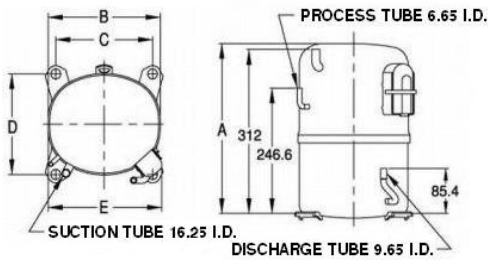


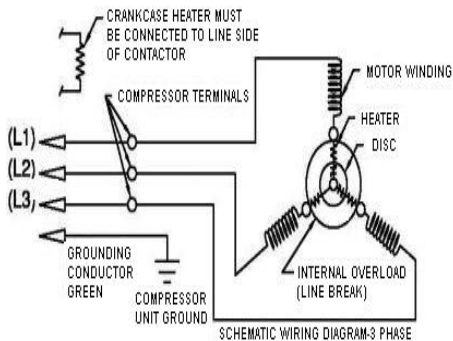


PRINCIPAL DIMENSIONS - mm



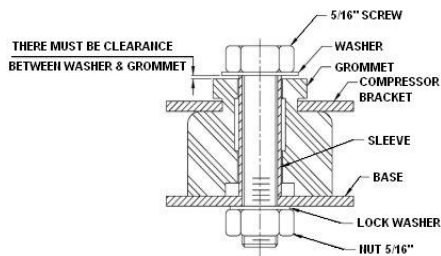
A: 324	B: 223	C: 191	D: 191	E: 239
--------	--------	--------	--------	--------

SCHEMATIC WIRING DIAGRAM 3 PHASE



SCHEMATIC WIRING DIAGRAM -

MOUNTING KIT



Electrical : 380-420 V/50 Hz., 460 V/60 Hz. 3 Phase

Nominal Performance

Capacity	1,624 / 1,750 Watts
	5,541 / 5,971 BTU/Hr
	1,396 / 1,505 Kcal/Hr
Power Input	1,140 / 1,260 Watts
Locked Rotor Amps	24.00 / 24.00 Amps
Max Continuous Current	- / - Amps
Rated Load Amps	2.10 / 2.10 Amps
COP	1.42 / 1.39 Watts / Watts
EER	4.86 / 4.74 BTU/W-Hr

Testing Conditions

Condensing Temperature	54.40 °C	129.9 °F
Evaporating Temperature	-23.30 / - °C	-9.9 / - °F
Liquid Temperature	32.20 °C	90.0 °F
Return Gas Temperature	32.20 °C	90.0 °F
Ambient Temperature	32.20 °C	90.0 °F

Application

Evaporating Temp. Range	LBP	@ -34.40 °C to -12.20 °C (-29.9° F to 10.0° F)
	Heat Pump	- °C to - °C (-° F to -° F)
Refrigerant	R404A	
Refrigerant Flow Control	Capillary Tube	
Compressor Cooling	Fan	

Compressor and Motor data

Compressor Type	Reciprocating
Displacement	43.10 cc.
Oil Type	Polyolester Oil
Oil Charge	1,067 cc.
Motor Type	3 PHASE ; 2 Pole 2,850 / 3,450 r/m
Voltage Range	342-462/414-506 Volts 50/60 Hz.
Winding Resistance at 25 °C	
L1-L2	6.95 Ohms
L1-L3	6.95 Ohms
L2-L3	6.76 Ohms
Weight with Oil	26.86 Kg.
Weight with Oil and Accessories	27.36 Kg.

Electrical Components

Motor Protector	
Type	Internal Overload
Model Number	4042KGE658-2
Open / Close	105-115 / 70-52 °C
1st Cycle trip at 25 °C	19.00 Amps(main) - Amps(start)
Motor Starter (CSR Only)	
Type	-
Model Number	-
Pick Up (max.)	- Volts
Drop Out (min.)	- Volts
Terminal Cover	KGM 901-2
Start Capacitor (CSR Only)	- µF - VAC.
Disch Resistor for Start Cap	-
Run Capacitor	- µF - VAC.

Mounting Kit

Rubber Grommet	4007KGM905-2
Sleeve Grommet	4023KGM903-2
Washer	-

Since we are constantly improving our product , the specification are subject to change without notice.

REV. DATE	C / N No.
13-10-17	0394/17

Certificate Marks

