



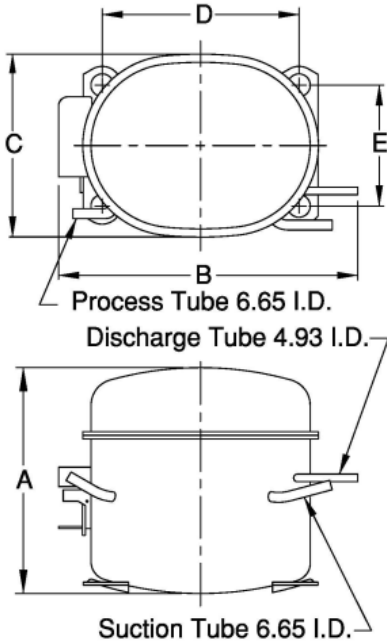
UNCONTROLLED COPY

KULTHORN KIRBY PUBLIC CO.,LTD.

TECHNICAL SPECIFICATION

HERMETIC COMPRESSOR
AE 6412E-2
BOM ID 07L-A0
Low Torque Start

PRINCIPAL DIMENSIONS - mm



A	189
B	277
C	155
D	165
E	102

ELECTRICAL : 208-230 Volt. 60 Hz. 1 Phase

Nominal Performance

Cooling Capacity :	386	Watts (1,317)	BTU/Hr
	332	Kcal/Hr	
Power Input :	284	Watts	
Lock Rotor Amps :	18.3	Amps	
Rated Load Amps :	1.7	Amps	
COP (EER) :	1.36	Watts/Watts (4.64)	BTU/ W-Hr

Testing Conditions

Condensing Temperature :	54.4	°C
Evaporating Temperature :	-6.7	°C
Liquid Temperature :	46.1	°C
Return Gas Temperature :	35	°C
Ambient Temperature :	35	°C

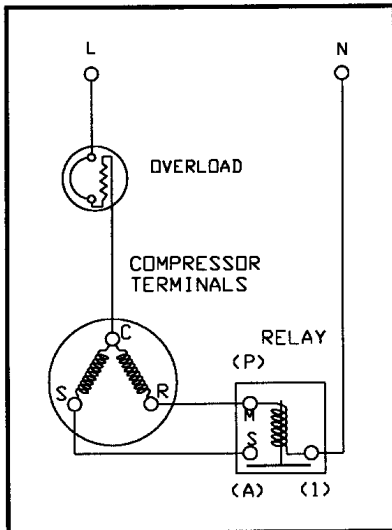
Application

Evaporating Range :	MBP @ -23.3 °C to -1.1 °C
Refrigerant :	R22
Expansion :	Capillary Tube
Compressor Cooling :	Fan

Compressor and Motor data

Compressor Type :	Reciprocating
Displacement :	4.50 cc.
Oil Type :	Mineral Oil
Oil Charge :	487 cc.
Motor Type :	R.S.I.R. ; 2 Pole 3500 rpm
Voltage Range :	187 - 264 Volts 60 Hz.
Winding Resistance at 25 °C	
Start :	22.22 Ohms
Run :	7.15 Ohms
Weight with Oil :	9.70 Kg.
Weight with Oil and Accessories :	10.10 Kg.

SCHEMATIC WIRING DIAGRAM - R.S.I.R.



Electrical Components

Motor Protector :

Type :	External 3/4"
Model Number :	KME 660-10/C
Open / Close :	115-125 / 78-60 °C
1st Cycle trip at 25 °C :	10.4 Amps

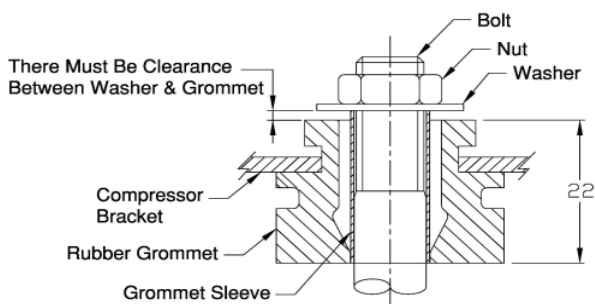
Motor Starter :

Type :	Current Relay
Model Number :	KME 681-8
Pick Up (max.) :	7.3 Amps
Drop Out(min.) :	6.4 Amps
Terminal Cover :	KMD 901-5
Start Capacitor :	No μ F No VAC.
Disch. Resistor for Start Cap :	15000 Ohms 2 W
Run Capacitor :	No μ F No VAC.

Mounting Kit

Rubber Grommet :	KMD 905-3	Earth Plug :
Sleeve Grommet :	KMD 903-2	Earth Screw :
Washer :		Washer Lock :

MOUNTING KIT



Since we are constantly improving our product ,
the specification are subject to change without notice.

REV. DATE

29-10-10

C / N No.

0460/10